

# FLO- DYNAMICS®

2021 PRODUCT CATALOG



Built in the USA

## THE LEADER IN FLUID MAINTENANCE EQUIPMENT

TRANSMISSION | POWER STEERING | COOLANT | BRAKE | AND MORE

[www.flodynamics.com](http://www.flodynamics.com)



## ABOUT US



# THE LEADER IN FLUID MAINTENANCE EQUIPMENT

### A change for the better

Flo-Dynamics is a leading equipment manufacturer of fluid maintenance equipment including: transmission fluid exchangers, coolant service equipment, brake fluid exchangers, power steering fluid exchangers, extraction devices and vacuum devices for liquid cleanup.

Flo-Dynamics is a division of Norco Industries, a privately owned 540,000+ square-foot manufacturing facility located in Elkhart, Indiana.

Flo-Dynamics has been engineering and perfecting our equipment since 1993. We have integrated many patented technologies and components, designed with the technician in mind.

We are the only transmission fluid exchange company with both domestic and import OE approvals for servicing cars, trucks and buses. All equipment comes standard with a limited one year warranty. For more details visit our website at [flodynamics.com](http://flodynamics.com).

### Industry-leading speed

Flo-Dynamics' automatic transmission equipment uses a patented pump manifold rated at 2.5 gallons of flow per minute, ensuring a fully automatic, precise and rapid exchange. *The closest competitor rates are 1 to 1.5 gallons of flow per minute.*

### Industry-leading accuracy

Our patented measuring technology inside all automatic transmission equipment sends electronic signals down through rods into the tank, creating a resistance number used to electronically pinpoint precise fluid levels. This technology requires no use of scales, which frequently go out of calibration, and no moving parts like bladder systems or pin-wheel mechanisms to slow the process.

### Our customers

Flo-Dynamics' equipment is used by some of the most prestigious companies, including:

**Mercedes Benz**  
**Ford**  
**GM**  
**Chrysler**  
**Sears**

**Pep Boys**  
**Jiffy Lube**  
**Midas**  
**Meineke**  
**Valvoline**

**Grease Monkey**  
**Audi**  
**VW**  
**Goodyear**  
**Firestone**

### PROUD SUPPORTER AND MEMBER OF:



# TABLE OF CONTENTS

## TRANSMISSION SERVICE EQUIPMENT

<b>735 SERIES</b> Heavy Duty .....	4-5
TS735 ATF inline .....	4
TSD735 ATF inline and dipstick .....	4
TSPS735 ATF inline plus power steering.....	5
TSDPS735 ATF inline and dipstick plus power steering.....	5
<b>PROMAX40</b> Heavy and Light Duty .....	6-7
ProMax40 ATF inline .....	6
Allison ATF Adapters .....	7
<b>400/450 SERIES</b> Light Duty .....	8-11
TS410 ATF inline .....	8
TSD440 ATF dipstick .....	8
TSD450 ATF inline and dipstick .....	9
TSD450LCDC ATF inline and dipstick plus integrated automatic chemical injection.....	9
TSD450TS ATF inline and dipstick plus touch screen panel.....	10-11
TSD450TSB ATF inline and dipstick plus touch screen panel with mobile app integration.....	10-11
<b>650 SERIES</b> Light Duty with Dual Tanks .....	12
TS650M ATF inline .....	12
TSD650LCD ATF inline and dipstick .....	12
<b>E SERIES</b> ATF & Motor Oil Extraction & Fill .....	13
E-100 ATF & oil extraction .....	13
EF-100 ATF & oil extraction and fill.....	13
<b>Standard ATF adapter kit</b> .....	14-15
<b>Optional ATF adapters</b> .....	16-17
<b>G-TEC HEATED FLUSHERS</b> .....	18-19

## POWER STEERING FLUID X-CHANGERS

PSX-2000 Handheld unit.....	20
PSX-2500 With remote pendant .....	20
PSX-3000 With remote pendant and rolling cabinet.....	21
DFPSX-500 Power steering plus differential fluid x-changer .....	28

## COOLANT SERVICE EQUIPMENT

VACFILL <sup>3</sup> Inline .....	22
VACFILL <sup>3+</sup> Inline with top off feature .....	22
PSI COOL Air operated, inline plus drain and fill .....	23
C-VAC <sup>3</sup> Air and 12V operated, inline plus drain and fill with automatic shut-offs .....	23

## BRAKE SERVICE EQUIPMENT

BrakeMate Jr. Brake bleeder and flusher.....	24
BrakeMate Jr. + Brake bleeder and flusher plus extraction .....	25

## EXHAUST FLUID EQUIPMENT

DEF-8000 Diesel exhaust fluid fill .....	26
DEF EXTRACTOR Diesel exhaust fluid extractor .....	27

## DIFFERENTIAL SERVICE EQUIPMENT

DFX-3500 Differential fluid x-changer.....	28
DFPSX-500 Power steering plus differential fluid x-changer .....	28

## MISCELLANEOUS

EVAC-U-MAX Multi-fluid extractor.....	29
AirVac Handheld wet vac .....	30-31



# Easily perform exchanges from low-flow vehicles to trucks and buses

### ALL 735 SERIES EQUIPMENT

#### FEATURES:

- Fully automatic, complete exchange with the push of a button
- Powerful 2.5 gallon per minute rated pump ensures rapid exchanges with unmatched speed
- Patented electronic measuring technology allows optimum fluid level to be maintained
- Select 1 to 35 quart exchange amount
- Ergonomically correct working height
- Fully interactive LCD control panel with easy-to-follow screen prompts with service indicators
- Patented flow diverter valve allows you to switch flow direction with the push of a button
- Add/remove fluid feature
- Fluid totalizer
- Volt meter
- Power loss memory
- Pause function
- Two inline 22-micron filters
- Rotocast polyethylene body and tanks won't scratch vehicle
- Drains transmission pan for filter change
- Adapter rack drains into waste tank keeping adapters dry and organized
- Clear service hoses provide visual confirmation of fluid exchange
- Durable, 5-inch locking caster wheels
- Included standard adapter set for easy hookup to virtually any make and model *(see pages 14-15 for details)*



Inline Exchange



Dipstick Exchange

SPECIFICATIONS	TS735	TSD735	TSPS735	TSDPS735
Dimensions	39"H x 24 3/4"W x 25"D			
Shipping Weight	138 lb.	143 lb.	149 lb.	151 lb.
Waste Fluid Tank	35 quarts			
New Fluid Tank	35 quarts			
Power	12V DC from vehicle battery			



Watch our demonstration video here



GOOD



MFG#: TS735  
P/N: 98018

Inline Exchange



BETTER

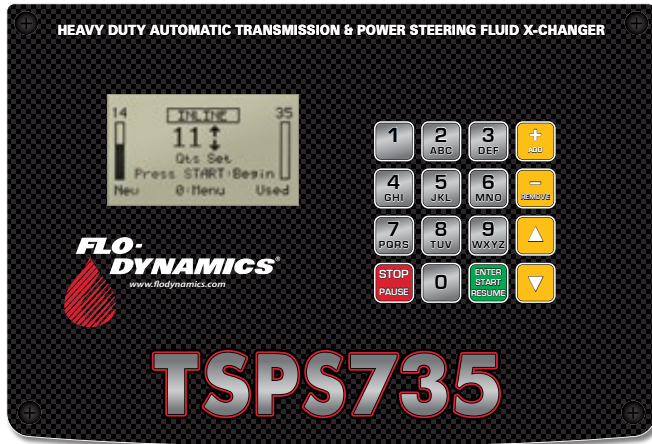


MFG#: TSD735  
P/N: 98019

Inline Exchange Dipstick Exchange

# 735 Series (Heavy Duty)

## ATF Inline and Dipstick Exchange with Power Steering



Fully interactive 735 series control panels provide easier operation with closer monitoring for greater efficiency, control and cost savings.

### RECOMMENDED ACCESSORIES



**AC Converter**  
Operate without using vehicle battery. Converts 110 volt AC to 12 volt DC  
**MFG#:40100009**



**Inline Chemical Injector**  
Easily inject chemicals during service  
**MFG#:942013**



**Replacement Filter**  
**MFG#:940796A**

### RECOMMENDED SERVICE SALES TOOLS



**Fluid Rx Instant Diagnostics**  
Diagnostic test sheets with laboratory comparison charts  
**MFG#:03065**



Power Steering

### ADDITIONAL POWER STEERING FUNCTION FEATURES:

- Fingertip controlled remote pendant for integrated power steering service



Patented fingertip controlled pendant with 11' reach allows faster one tech power steering service

**BEST**



**MFG#: TSPS735**  
**P/N: 98020**

Inline Exchange Power Steering

**PREMIUM**



**MFG#: TSDPS735**  
**P/N: 98021**

Inline Exchange Dipstick Exchange Power Steering



## Perfect for fleet service centers with the industry's most extensive adapter coverage

Includes both standard and Allison adapter sets to easily hookup to virtually any automobile, truck, or bus.

### ProMax40 FEATURES:

- Powerful 2.5 gallon-per-minute pump performs complete fluid exchange in minutes
- Fully automatic operation
- Works with vehicle's 12 volt battery
- Adapter management rack
- REMOVE fluid feature allows easier and cleaner removal of pan for filter change when necessary
- Waste fluid is drained at the touch of a button
- Four capacity selections (16, 20, 28 & 40 qt.) allow for specified amounts of automatic transmission fluid to be pumped through the transmission for more cost-effective servicing



Watch our demonstration video here



MFG#: ProMax40  
P/N: Promax40

Inline Exchange



**UNIVERSAL ALLISON ATF ADAPTERS (KIT: #941168)**

Description	Diameter Lines	Thread	MALE ADAPTER			FEMALE ADAPTER		
			Part #	Hose #	Image	Part #	Hose #	Image
30° M/F PTT #12	1-5/16"	14	<b>941844</b>	#134		<b>941845</b>	#135	
45° M/F #12	1-1/16"	14	<b>941846</b>	#136		<b>941847</b>	#137	
37° M/F #16 JIC	1-5/16"	12	<b>941849</b>	#139		<b>941848</b>	#138	
37° M/F #10	7/8"	14	<b>941851</b>	#141		<b>941850</b>	#140	
ORFS M/F #12	1-3/16"	12	<b>941893</b>	Fitting		<b>941894</b>	#143	
37° M/F #12 JIC	1-1/16"	12	<b>941895</b>	#144		<b>941896</b>	#145	
M- 1 Flat Face F- 1 with O-Ring	1-1/16"		<b>941898</b>	#147		<b>941897</b>	#146	
ORFS M/F #10	1"	14	<b>941904</b>	#153		<b>941903</b>	#152	
GM Style Top Kick Adapter Set M & F Adapters			<b>941966</b>	NA				

**Also includes all standard adapters (see pages 14 and 15)**



Fully interactive control panel provides easier operation with closer monitoring for greater efficiency, control and cost savings.

SPECIFICATIONS	ProMax40
Dimensions	43"H x 23"W x 26"D
Shipping Weight	140 lb.
Waste Fluid Tank	40 quarts
New Fluid Tank	40 quarts
Power	12V DC from vehicle battery



## Fastest service times in comparative testing

### ALL 400 AND 450 SERIES EQUIPMENT FEATURES:

- Powerful 2.5 gallon per minute rated pump for unmatched speed
- Fully automatic operation
- Special chemical flushing mode
- Proven, accurate fluid measurement (+/-3%)
- Individual ADD and REMOVE fluid buttons
- Power interruption memory
- Drains transmission pan for filter change
- 24 quart capacity new and waste fluid tanks with 21 quart exchange capability
- Pause button
- 12 volt powered
- Volt meter
- Adapter rack drains into the waste tank keeping the adapters dry and organized
- Rotocast polyethylene body and tanks won't scratch vehicle
- Small platform saves space
- Quart counter
- Durable 5-inch locking caster wheels
- Clear service hoses provide visual confirmation of fluid exchange

### RECOMMENDED ACCESSORIES



#### AC Converter

Operate without using vehicle battery. Converts 110 volt AC to 12 volt DC  
MFG#:40100009



#### Inline Chemical Injector

Easily inject chemicals during service  
MFG#:942013



#### Replacement Filter

MFG#:940796A

### RECOMMENDED SERVICE SALES TOOLS



#### Fluid Rx Instant Diagnostics

Diagnostic test sheets with laboratory comparison charts  
MFG#:03065



Inline Exchange



Dipstick Exchange



Watch our demonstration video here

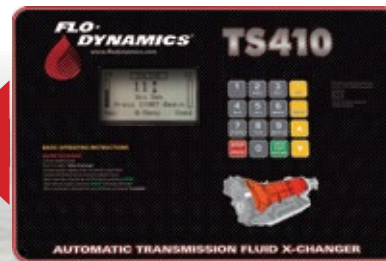


GOOD



MFG#: TS410  
P/N: 98000

Inline Exchange



GOOD



MFG#: TSD440  
P/N: 98001

Does not include adapters

Dipstick Exchange

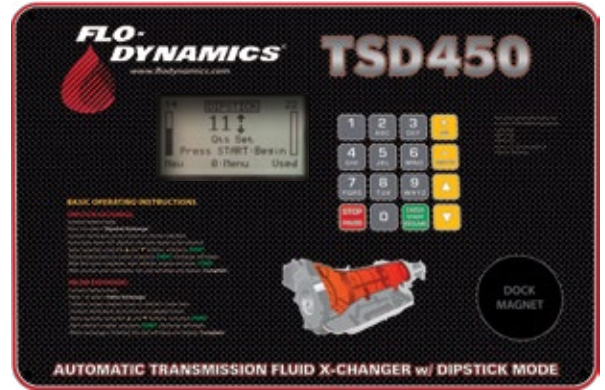




# Large backlit LCD screen provides easy-to-follow screen prompts with service indicators

### ALL 400 AND 450 SERIES LCD PANEL FEATURES:

- Ability to select 1 to 20 quarts exchange amount
- Ergonomically correct working height
- ADD/REMOVE fluid feature
- Quart counter
- Pause button
- Fluid totalizer
- Reverse hoses indicator
- Ability to reverse flow direction with the push or pull of a knob (TSD450LCDC)



SPECIFICATIONS	TSD440	TS410	TSD450	TSD450LCDC	TSD450TS (shown on next page)	TSD450TSB (shown on next page)
Added Functions				Integrated automatic chemical injection One-touch flow reversal	Touch screen panel	Touch screen panel with smart features
Inline Exchange		✓	✓	✓	✓	✓
Dipstick Exchange	✓		✓	✓	✓	✓
Adapters Included		✓	✓	✓	✓	✓

Dimensions	39"H x 24 3/4"W x 25"D
Power	12V DC from vehicle battery
Shipping Weight	133 lb.
Waste Fluid Tank	24 quart
New Fluid Tank	24 quart



**BETTER** ★★

**MFG#: TSD450**  
**P/N: TSD450LCD**

Inline Exchange Dipstick Exchange



**BEST** ★★★

**MFG#: TSD450LCDC**  
**P/N: 40400031**

Includes integrated automatic chemical injection

Inline Exchange Dipstick Exchange

### AUTOMATIC CHEMICAL INJECTION

- Automatically programmed chemical injection for both cleaner and conditioner
- Screen prompts to confirm chemicals are ready to be injected
- Onboard supply bottle



Flow diverter valve (TSD450LCDC)



Watch our demonstration video here

# 450 Smart Series (Light Duty) ATF Inline and Dipstick Exchange



TRANSMISSION

## TOUCH SCREEN PANEL:

Features everything from 400/450 series plus:

- 6.25" x 3.5" fully interactive easy-to-use color touch screen

## TOUCH SCREEN PANEL WITH MOBILE APP INTEGRATION:

Features everything from 400/450 series plus:

- 6.25" x 3.5" fully interactive easy-to-use color touch screen
- Custom app for smart device uses Bluetooth communication
- Program, monitor and receive notifications via app
- Built-in adapter charts
- Selectable units (quart/liter)
- Additional training in demo mode
- Shows progress
- Displays voltage to ensure a proper power source
- Records service history
- Voltage display
- Filter change mode
- Fill mode
- Export/record/save service info
- Five languages built into the program:  
English, Spanish, French, Italian, German



## RECOMMENDED ACCESSORIES



### AC Converter

Operate without using vehicle battery. Converts 110 volt AC to 12 volt DC

**MFG#:40100009**



### Inline Chemical Injector

Easily inject chemicals during service **MFG#:942013**

## RECOMMENDED SERVICE SALES TOOLS



### Fluid Rx Instant Diagnostics

Diagnostic test sheets with laboratory comparison charts  
**MFG#:03065**

**PREMIUM**



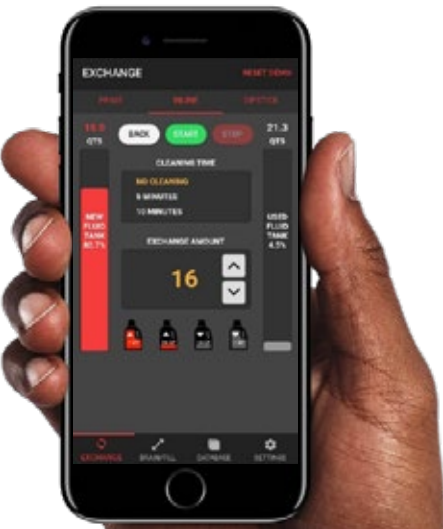
**MFG#: TSD450TS**  
**P/N: 40400055**

*Touch screen panel only*

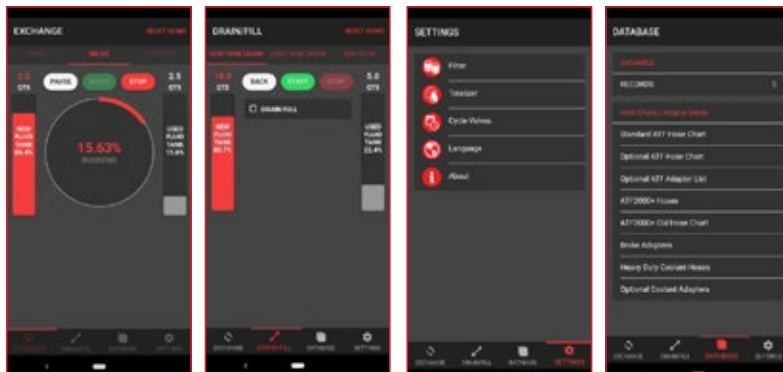
**MFG#: TSD450TSB**  
**P/N: 40400027**

*Includes touch screen panel with mobile app integration*

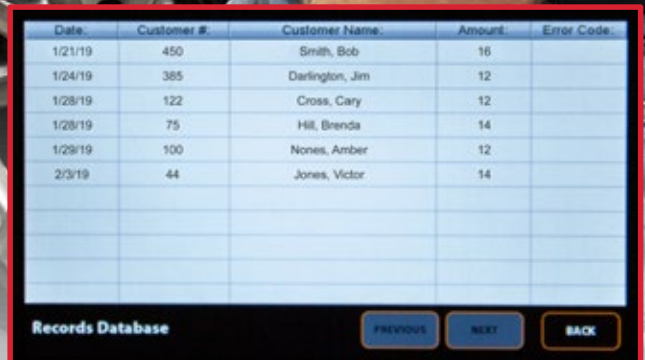
Inline Exchange Dipstick Exchange



**Mobile app compatibility available only for TSD450TSB.**







**Touch screen panel is standard equipment on both TSD450TS and TSD450TSB. Mobile app compatibility available only for TSD450TSB.**

## Dual tanks for a quick fluid switch

### ALL 650 SERIES FEATURES:

- Two new fluid tanks allow user to select fluid type at the touch of a button
- Special chemical flushing mode
- Fully automatic operation
- Powerful 2.5 gallon per minute rated pump for unmatched speed
- Power interruption memory
- Special ADD/REMOVE fluid function for vehicle filter change
- Ergonomically correct working height
- Volt meter
- Rotocast polyethylene body and tanks won't scratch vehicle
- Durable, 5-inch locking caster wheels
- Visible confirmation of fluid exchange includes a sight tube on TS650M, or clear service hoses on the TSD650LCD

### OPTIONAL ACCESSORIES:



Mercedes Benz Adapter (Available from Mercedes-Benz)



Wall Mounted Hose Rack (Hoses not included) #941220



Optional Adapter Set #940999

SPECIFICATIONS	TS650M	TSD650LCD
Dimensions	49"H x 23"W x 27"D	
Service Hoses	10' outside of machine	
Power	12V DC from vehicle battery	
Shipping Weight	170 lb.	
New Fluid Tanks	(2) 28 quart	
Waste Fluid Tank	(1) 28 quart	



**GOOD** ★

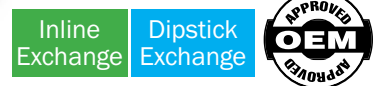
**MFG#: TS650M  
P/N: 98010**

Special ATF cleaning mode



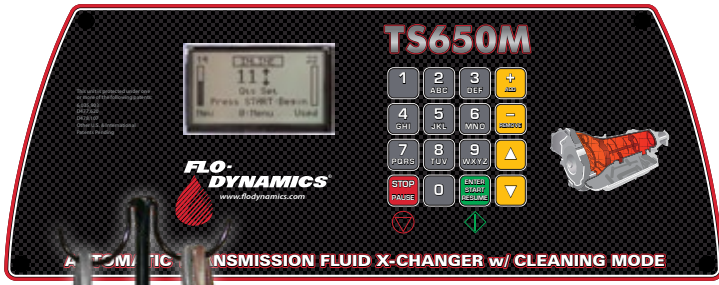
**BEST** ★★ ★

**MFG#: TSD650LCD  
P/N: TSD650**



### ALL 650 SERIES LCD PANEL FEATURES:

- Fully interactive control panel
- Large backlit LCD screen provides easy to follow screen prompts with service indicators
- Ability to select 1 to 24 quarts exchange amount
- ADD/REMOVE fluid feature
- Quart counter
- Pause button





# Engineered to extract or fill all types of ATF including CVT fluids, as well as motor oil.

### E-100 ATF EXTRACTION FEATURES:

- Graduated fluid level scale on waste tank for gallons, quarts and liters
- 12V DC powered, rated 4 GPM pump used for extracting used fluid and emptying waste tank
- Large capacity, 4 gallon (16 quart) waste tank
- 6' extraction tubes 5/16" & 1/4" (see extraction rates below)



Included with E-100

### EXTRACT & FILL RATES TRANSMISSION FLUID @ 72°F

	Extraction E-100 & EF-100	Fill EF-100
5/16"	1.75 qt./min.	4 qt./min.
1/4"	.6 qt./min.	2qt./min.



**GOOD** ★

**MFG#: E-100**  
**P/N: 40400032**

ATF  
Extraction



**BEST** ★★ ★

**MFG#: EF-100**  
**P/N: 40400035**

ATF  
Extraction

ATF  
Fill



Included with EF-100

### EF-100 ATF EXTRACTION AND FILL FEATURES:

- Everything listed in the E-100, plus Y Adapter
- 12V DC powered, new fluid diaphragm pump
- Large 3 gallon (12 quart) capacity new fluid tank

SPECIFICATIONS	E-100	EF-100
Dimensions	30" H x 18" W x 28" D	
Shipping Weight	45 lb.	48 lb.
Waste Fluid Tank	4 gallon (16 quart)	
New Fluid Tank	NA	3 gallon

# Standard ATF Adapter Kit

Industry's most extensive adapter coverage



## MULTIPLE MANUFACTURER ADAPTERS

TRANSMISSION

Description	Diameter Lines	Thread	MALE ADAPTER			FEMALE ADAPTER		
			Part #	Hose #	Image	Part #	Hose #	Image
Chrysler, Ford Aerostar, Jaguar, Mercedes, Cadillac	1/2"	20	<b>941817</b>	#67		<b>941816</b>	#66	
Jeep Cherokee Ford Escort NPT	1/4"	18	<b>941815</b>	#65		<b>941825</b>	#75	
Ford F-250, 350, 450 & Excursion [Adapter + Hose #66] Dodge Truck V6 & V8, Jeep Grand Cherokee	1/2"	20	<b>*940328</b>	NA		<b>941809</b>	#59	
Ford F-150, Explorer, Edge; Cadillac STS (2006 & 2007)(Release with Ford Style Quick Disconnect Tool for 2007) [Adapter mates with Hose #66]	3/8"	20	<b>*941910</b>	NA		<b>941805</b>	#55	
Lincoln Continental, Ford Taurus [Adapter mates with Hose #66]	5/16"		<b>*940334</b>	NA		<b>941813</b>	#63	
General Motors with 3/8" Tube Diameter Lines Ford F-150 (5.4L), Fusion, Contour	5/8"	18	<b>941803</b>	#53		<b>941807</b>	#57	
GM 3/4 & 1 Ton w/ Allison Transmission (2002 & Newer) Dodge 2500 [Adapter mates with Hose #66]	1/2"	20	<b>*942169</b>	NA		<b>941809</b>	#59	
Import	1/4"	NA	<b>941828</b>	#80		<b>941829</b>	#81	
Infiniti, Lexus, and BMW	9/32"	NA	<b>941830</b>	#82		<b>941813</b>	#63	
Toyota, Nissan, Honda, Ford, Chrysler	3/8"	NA	<b>941831</b>	#83		<b>941805</b>	#55	
Toyota, Nissan, Honda	1/2"	NA	<b>941832</b>	#84		<b>941809</b>	#59	

## CHRYSLER, DODGE, JEEP

Description	Diameter Lines	Thread	MALE ADAPTER			FEMALE ADAPTER		
			Part #	Hose #	Image	Part #	Hose #	Image
1500 Series Truck (5.9L)	5/8"	18	<b>941802</b>	#52		<b>941801</b>	#51	
Durango Dakota	9/16"	18	<b>941835</b>	#87		<b>941836</b>	#88	
Dodge 3500 Cummins Turbo	3/4"	18	<b>940388</b>	#124		<b>940389</b>	#142	

All standard adapters are included in kit #940999. Kit #940775 does not include the metal adapters mark with an asterisk (\*)



# Standard ATF Adapter Kit

Industry's most extensive adapter coverage



TRANSMISSION

FORD								
Description	Diameter Lines	Thread	MALE ADAPTER			FEMALE ADAPTER		
			Part #	Hose #	Image	Part #	Hose #	Image
Ford Windstar, Freestar, Focus, F-150, Transit Van (2009+) [Adapter mates with Hose #66]	3/8"	20	*940329	NA		941805	#55	
Ford with large nut adapter	5/8"	18	941818	#68		941819	#69	
Ford with 5/16" Small/long nut adapter	1/2"	20	941823	#73		941822	#72	
F-150 (2009) Escape (2001-2009) [Adapter mates with Hose #66]	1/2"	20	*941923	NA		941809	#59	
Ford Escort	Banjo Fitting M14x1.5 Thread		940875	#79		940874	#78	
Ford Focus (2006-2011) [Adapter mates with Hose #66]	3/8"	20	*941925	NA		941805	#55	
Ford F-250 & F-350 (Powerstroke & Gasoline w/ Torque Shift Transmission)	3/4"	18	941960	#91		941961	#92	
Focus Edge (2012+)	5/8"	18	943063	#100		943064	#101	
Focus Mercury Mystique	5/8"	18	941080	#93		941081	#94	
GENERAL MOTORS								
Description	Diameter Lines	Thread	MALE ADAPTER			FEMALE ADAPTER		
			Part #	Hose #	Image	Part #	Hose #	Image
General Motors with 5/16" Tube Diameter Lines Ford Expedition	1/2"	20	941820	#70		941821	#71	
GM w/ Quick Disconnect (942162 - Blue Disconnect Tool) Dodge Charger [Adapter mates with Hose #66]	3/8"	20	*942163S	GM Adapter		941805	#55	
Chevy Duramax w/ Allison Transmission (5.4L V-8 & Smaller)	3/4"	16	941841	#89		941842	#90	
Chevy Duramax w/ Allison Transmission (6.0L V-8 & Larger) (Adapter mates with Hose #51)	5/8"	18	*941899	NA		941900	#149	




All standard adapters are included in kit #940999. Kit #940775 does not include the metal adapters mark with an asterisk (\*)

# Optional ATF Adapters

Industry's most extensive adapter coverage



TRANSMISSION

Description	Part #	Image
<b>CHRYSLER, DODGE, JEEP</b>		
Dodge 4WD Open-End Hose Substitute: Works with 1/2" Adapters	<b>40100082</b>	
Dodge/Ford female thermostat bypass fitting	<b>40100089</b>	
<b>FORD</b>		
Ford 6R Sealed Transmission Adapter (Used with Y-Adapter included w/ machine)	<b>40100019</b>	
Ford Transit Connect, 250 & 350	<b>40100035</b> (Hose & Adapter) <b>40100053</b> (Adapter Only)	
Ford Escape	<b>40100039</b>	
Ford Explorer (2012+) 1/8" NPT Drain Plug Adapter	<b>40100083</b>	
<b>GENERAL MOTORS</b>		
M18 x 1.5 Cadillac Dipstick Adapter	<b>942029</b>	
Chevy Full Size	<b>40100038</b>	
Chevy Duramax (6.0L & Larger) Open-End Hose Substitute: Works with 5/8" Adapter	<b>40100084</b>	

Description	Part #	Image
Buick Envision & Enclave	<b>40100075</b>	
Open-End Hose Substitute: Works with GM Adapter	<b>40100080</b>	
<b>IMPORT</b>		
Audi Q5 (2016-17)	<b>40100081</b>	
Range Rover (All) BMW X3 (2012)	<b>40100085</b>	
BMW / Jaguar / Mercedes 10mm	<b>941963</b>	
BMW / Jaguar / Mercedes 12mm	<b>941962</b>	
Land Rover	<b>941927</b>	
	<b>941928</b>	
Mercedes [F]	<b>40200275</b>	



# Optional ATF Adapters

Industry's most extensive adapter coverage



TRANSMISSION



Description	Part #	Image
Mercedes [M]	<b>40200276</b>	
Mercedes 230 Series	<b>40100049</b> (Hose & Adapter) <b>40300286</b> (Adapter Only)	
Toyota/Lexus	<b>40100018</b>	
Toyota/Lexus Metric Step Adapter Kit Step adapter also works with open-end hoses #55 & #81.	<b>40200865</b>	
	<b>40200883</b>	
Volkswagen Passat 12mm	<b>941979</b>	
Volvo V70 / 850AWD 15mm	<b>941964</b>	

Description	Part #	Image
Volvo S Series Push Lock 13.5mm	<b>941965</b>	
.34" Slider Pin Adapter (Used w/ 940334 5/16" Fittings)	<b>40100004</b>	
.40" Slider Pin Adapter Used w/ 940329, 941910, & 942635 3/8" Fittings	<b>40100005</b>	
.51 Slider Pin Adapter Used w/ 940328 1/2" Fittings	<b>40100006</b>	
.64 Slider Pin Adapter Used w/ 941899 5/8" Fittings	<b>40100007</b>	
"TE" Adapter Open-End Hose Substitute: Works with 3/8" Adapters	<b>40200680</b>	
"TD" Adapter Open-End Hose Substitute: Works with 5/16" Adapter	<b>40200681</b>	

# G-TEC Heated Flushers

## The Original Heated Component Flusher



### G-TEC HEATED FLUSHERS ELIMINATE COMEBACKS AND MECHANICAL FAILURE



Watch our  
demonstration  
video here

#### Why use a Heated Flusher?

A heated flusher cleans out the cooler lines, heat exchanger as well as other components prior to installing a rebuilt or new transmission—a process which has been proven to minimize the likelihood of repeat repairs.

G-TEC Heated Flushers quickly and easily remove contamination by melting waxy varnish residue from burnt ATF and purging the particles and contaminants from the system.

#### TTCF-6 BASIC HEATED FLUSHER FEATURES:

- 10 Gallon all-steel tank
- Immersion heater
- 1750 PPM pulsating pump
- Commercial-grade motor with 1/2 HP service factor
- Spin-on filters
- Domestic adapters



MFG#: TTCF-6  
P/N: 40400036

GOOD



### UPGRADE YOUR BASIC FLUSHER WITH OUR ALL-INCLUSIVE UPGRADE KIT

#### Upgrade Kit

Convert your TTCF-6 to a TTCF-7AR with a TTCF-UGK

MFG#:TTCF-UGK  
P/N: 40300274

## ACCESSORIES FOR ALL G-TEC HEATED FLUSHERS



#### Tool Tray & Bracket

#40300290 (TTCF-TT)  
Necessary for reverser, fluid purge and Oberg filter. Also holds adapters.



#### Fluid Purge Valve

#40300279 (TTCF-PV)  
Allows users to purge contaminated fluid into a disposal container, prolonging the life of cleaning fluid and filters.



#### Flow Meter Kit

#40300281 (TTCF-FMK)  
Easily monitor fluid flow. Flow decrease indicates blockages. Allows visibility of fluid color to determine when to replace filters.



#### Manual Reverser Kit

#40100055 (TTCF-MR)  
Don't struggle with uncoupling, switching and recoupling hot lines. Change the direction of the flow by simply turning the handle.



# G-TEC Heated Flushers

## The Original Heated Component Flusher



**MFG#: TTCF-7AR**  
**P/N: 40400037**

**BETTER** ★★

### TTCF-7AR PREMIUM HEATED FLUSHER FEATURES:

This model features everything on the TTCF-6 Basic Heated Flusher model plus:

- Flow meter
- Tool tray
- Fluid purge valve
- Air purge system
- Vent tower
- Pump/motor shroud with hose holders
- Manual reverse valve
- Domestic adapters
- Banjo adapters
- Honda adapters

### TTCF-8 DELUXE HEATED FLUSHER FEATURES:

This model comes with all the features of our TTCF-7AR Premium Heated Flusher plus:

- One-nut Oberg 64 micron filter, to easily show customers the dirt cleaned from their system
- Nearly every adapter we offer allows you to clean hundreds of different make/model cooler lines
- Hour meter
- Domestic adapters
- Banjo adapters
- Honda adapters
- Push on adapters
- Early Super-Duty adapters
- Toyota/Lexus puck adapters
- Honda/Acura puck adapters
- Audi/VW/Nissan adapters



**MFG#: TTCF-8**  
**P/N: 40400038**

**BEST** ★★★



#### Air Injection Kit

#40300283 (TTCF-APA)  
Allows user to agitate fluid during flushing to clean the system faster and more effectively. Has been shown to reduce flushing time by up to 75%. Can also be used to purge fluid from lines after flushing.



#### Oberg Filter

#40300269 (TTCF-4028V)  
A great visual aid for the customer! See debris being flushed out of the lines. When there is no more debris present on the screen, flushing is complete. Screen replacements sold separately. #40200588



#### Hour Meter

#40200514 (TTCF-HM)  
Monitors cleaning time of the flusher, helping users know when to change the filters. Filters must be changed to get optimum cleaning from the flusher.



#### Data Acquisition

#40200679 (TTCF-DAQ)  
Prints out a snapshot of the current conditions of fluid and flow. Push one button to see temperature, in and out pressure and rate of fluid flow. For use with Oberg filter.

# Replaces up to **95%** of the old power steering fluid in less than 8 minutes!



**GOOD** ★

**MFG#: PSX-2000**  
**P/N: PSX2000**



**Watch our demonstration video here**

## **PSX 2500 INCLUDES THE SAME FEATURES AS THE PSX 2000, PLUS:**

- Fingertip controlled pendant with 11' reach allows for easier, faster service
- Roll around cart holds the unit at an ergonomically correct working height



*Patented fingertip controlled pendant with 11' reach allows faster one tech power steering service*



**BETTER** ★★

**MFG#: PSX-2500**  
**P/N: PSX2500**

# Designed to last in high volume shops

**PSX 3000 INCLUDES THE SAME FEATURES AS THE PSX 2000 AND 2500, PLUS:**

- Larger new and waste fluid reservoirs for multiple services
- Rotocast polyethylene body and tanks prevent vehicle damage
- No bay required
- Unlike continuous flow models, YOU control the fluid volume, reducing the amount of wasted material



Patented fingertip controlled pendant with 1.1' reach allows faster one tech power steering service



**MFG#: PSX-3000**  
**P/N: PSX3000**



POWER STEERING

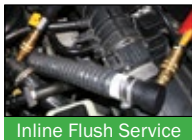
SPECIFICATIONS	PSX 2000	PSX 2500	PSX 3000
Dimensions	23"L x 10 3/4"H x 11"D	36 3/4"H x 25"W x 18 1/2"D	39"H x 17"W x 25"D
Shipping Weight	16 lb.	68 lb.	82 lb.
New Fluid Reservoir	2 quarts		5 quarts
Waste Fluid Reservoir	2 quarts		20 quarts
Power	12V DC from vehicle		

**Note: see page 28 for the DFPSX-500, a combo machine to service differentials, manual transmissions, transfer cases and power steering systems.**



## Fast, simple, easy, five minute service

The VacFill<sup>3</sup>/VacFill<sup>3</sup>+ are the quickest and most efficient way to perform a drain and fill coolant service using only shop air. Simply remove the radiator cap, insert the cone adapter, (yes, it's included!) and begin the suction process. When you see no more old fluid coming out, switch to the desired fluid and the vehicle's vacuum will fill it to the top automatically. **It doesn't get easier than this!**



### VACFILL3 AND VACFILL3+ FEATURES:

- Easily connects to radiator mouth
- Vacuums out unwanted air
- VacFill<sup>3</sup> uses only shop air
- Easy to operate with large gauges
- Recessed storage area
- Small footprint
- Easy to move with two 10" rear wheels, two locking front polyethylene casters and handle
- Vacuum gauge
- Includes hose clamps, universal cone adapter to fit any vehicle, and wand adapter
- VacFill<sup>3</sup>+ includes "top off" feature

Included with both VacFill<sup>3</sup> and VacFill<sup>3</sup>+ #40100101



### RECOMMENDED SERVICE SALES TOOL



#### Fluid Rx Instant Diagnostics

Diagnostic test strips with laboratory comparison charts  
**MFG#:03070**



**GOOD** ★

**MFG#: VACFILL<sup>3</sup>**  
**P/N: VACFILL3**

Inline Flush Service

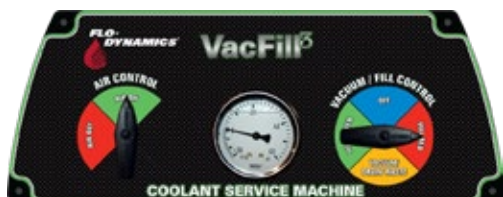


**BETTER** ★★

**MFG#: VACFILL<sup>3</sup>+**  
**P/N: VACFILL3PLUS**

Includes "top off" feature for adding fluid to overflow reservoirs

Inline Flush Service



SPECIFICATIONS	VACFILL <sup>3</sup>	VACFILL <sup>3</sup> +	PSI COOL	C-VAC <sup>3</sup>
Dimensions	48 1/2"H x 23"W x 27"D		52"H x 23"W x 27"D	
Shipping Weight	132 lb.	144 lb.	152 lb.	159 lb.
New Fluid Tank(s)	(2) 7 gallons	(2) 7 gallons	7 gallons	(2) 7 gallons
Waste Fluid Tank	8 gallons	8 gallons	8 gallons	8 gallons
Power	115 psi shop air	12V DC and shop air	115 psi shop air	12V DC and shop air

# PSI COOL/C-VAC<sup>3</sup> Drain & Fill plus Inline Flush Coolant Service



**BEST**

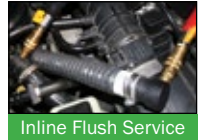
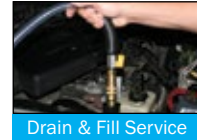


**MFG#: PSI COOL  
P/N: 98012**

Drain & Fill Service | Inline Flush Service

### PSI COOL FEATURES:

- No electricity needed—runs on compressed air
- Fast, efficient engine-off process
- Removes air pockets
- Drains coolant for component change
- Performs vacuum and fill service
- Dual sight tubes allow user to quickly identify tank fluid levels
- Performs full flush service
- Clear hose for visual effect
- Easy to use control panel
- Simple, efficient operation
- Includes kit# 941472W



Included with PSI COOL #40100100



**Watch our demonstration video here**

### OPTIONAL HEAVY DUTY ADAPTERS AND HOSES

941981	Complete HD Hose Kit	941978L	4" Radiator Hose
941971A	2"-4" Step Adapter	R942151	2.5" Hose Clamp
941974	2" Radiator Hose	941975C	2"-2.5" Hose Clamp
941975L	2.5" Radiator Hose	941976C	3" Hose Clamp
941976L	3" Radiator Hose	941977C	3.5" Hose Clamp
941977L	3.5" Radiator Hose	941978C	4" Hose Clamp

## One machine—multiple services!

### C-VAC<sup>3</sup> FEATURES:

- Rapidly DRAIN/FILL from radiator mouth using the vacuum and fill process
- Quickly and thoroughly flush and exchange coolant
- Easy to use control panel
- Quick seal connectors keep fluid inside hoses rather than on the floor
- Drain for component change

- Perform a pressure test on the system and radiator cap
- Includes Step Adapters: 1-1/8", 1-3/8", 1-1/2", 1-3/4" with matching hoses
- Automatic new and waste fluid tank shutoff with indicator
- Pressure/vacuum gauge
- Includes kit# 941472W

### OPTIONAL ADAPTERS

941986W  
Ford D-Gas adapter kit



40100058  
VW Beetle (1999-17)



40100087  
Dodge Journey (2009+)



40100073  
Asian



40100013  
Chevy, Dodge, Ford cap adapter



40100037  
Ford Focus/Fusion adapter kit



40100014  
Turbo coolant cap adapter



40100060  
Chevy Silverado (2014)



942034W  
Audi/BMW



**PREMIUM**



**MFG#: C-VAC<sup>3</sup>  
P/N: RADCVAC3**

Drain & Fill Service | Inline Flush Service



Included with CVAC<sup>3</sup> #40100072





# BrakeMate Jr. Brake Flush Machine



## BRAKEMATE JR. EQUIPMENT FEATURES:

- New fluid tank (5 quarts) includes automatic low fluid shutoff
- Able to handle high pressure hybrid vehicle brake systems
- Extensive master cylinder adapter set with carrying case (attaches to unit)
- Pressure regulator gauge for proper fluid pressure setting (1 - 49 psi)
- Operates on 12 volts DC
- Handy waste fluid container (1/2 quart)
- Four polyurethane casters for easy mobility



**#945019**  
Optional Brake Fluid Extractor



**#945015**  
Waste Fluid Bottle connects to vehicle's bleeder screws and chain with hook holds bottle in place



**Watch our  
demonstration  
video here**



**BEST** ★★ ★

**MFG#: BRAKEMATE JR.**  
**P/N: 98002 WITH MASTER CYLINDER ADAPTER SET**  
**P/N: 98003 WITHOUT MASTER CYLINDER ADAPTER SET**

Master cylinder adapter set with storage case  
**P/N: 941416**

BA01 #941588W	BA07 #941593W	BA11 #941597W
BA02 #941589W	BA08 #941594W	BA12 #941598W
BA03 #941590W	BA09 #941595W	BA13 #941585W
BA04 #941591W	BA10 #941596W	BA14 #941599W
BA05 #941592W		

**View the always-updated brake  
bleeder adapter application  
chart here**

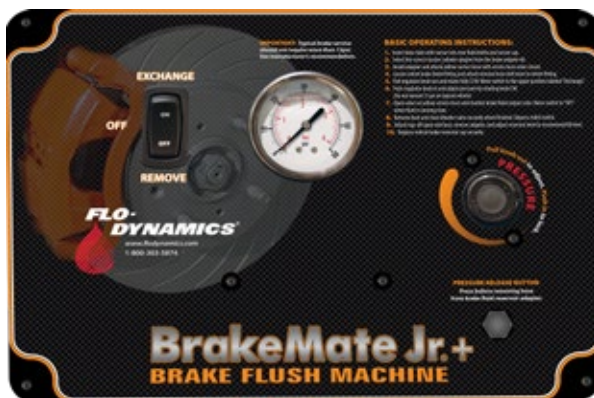
BRAKE



## Integrated extraction ability, great for draining reservoirs and vacuuming at bleeder valve

### BRAKEMATE JR.+ EQUIPMENT FEATURES:

- Connects to commercially available 32 or 64 fl. oz. bottles of new fluid
- Able to handle high pressure hybrid vehicle brake systems
- Pressure regulator gauge for proper fluid pressure setting (1 - 49 psi)
- Extensive master cylinder adapter set with carrying case (attaches to unit)
- Operates on 12V DC
- Removable waste fluid tank (4 quarts)
- Four polyurethane casters for easy mobility
- Easily REMOVE and TOP OFF the master cylinder reservoir
- Pressure release valve for cleaner disconnect
- Up to 18' coiled hose



**PREMIUM** ★★★★★

**MFG#: BRAKEMATE JR.+  
P/N: 40400051**

SPECIFICATIONS	BrakeMate Jr.	BrakeMate Jr.+
Dimensions	39"H x 17"W x 26"D	38" H x 18" W x 28" D
Shipping Weight	103 lb.	103 lb.
New Fluid Tank	5 quarts	Connects to commercially available 32 or 64 fl. oz. bottles
Waste Fluid Tank	1/2 quart w/ chain	4 quarts
Power	12V DC	12V DC

### OPTIONAL ADAPTERS

	<b>BAH0N1</b> Honda 2014+ w/ Cap Dia. 2.36" #40200454		<b>Honda (Size 16)</b> #40100001		<b>BA04-SP</b> #40100045 2014+ Ford Fusion, Mazda 6, & others		<b>BA13</b> Small Toyota #941585W
	<b>Honda (Size 12)</b> #40100000		<b>Honda w/ Limited Space (Adapter 25)</b> #941584W		<b>BA30</b> #40100034 Chevy Spark		<b>BA31</b> #40100040 Buick Encore

# The answer for transporting DEF from your bulk tank to a vehicle



The DEF8000 has all the features you require, including: a small platform size, which allows for easy mobility through doorways and around lifts, an accurate metering device located near the handle for easy visual filling, and an automatic shutoff nozzle for, safe, reliable service.

The DEF8000 has also been engineered with a nozzle “bath holder” which keeps the nozzle tip from crystallizing and keeps the auto shut-off working properly. Simply put, this machine is the cleanest, safest, easiest, and most cost-efficient method of transferring DEF material ever devised.

**FEATURES:**

- Specifically designed to handle DEF material
- Non-Drip Nozzle with Benecor metering device +/- 1% after calibration
- Automatic shut off with non-drip nozzle
- Water bath nozzle holder ensures proper function of vacuum shutoff
- Large 3.5 GPM pump for fast delivery
- Small platform for easy mobility around the shop
- 18’ power cord makes different fill locations easy to reach
- 6’ service hose
- Easy operation
- Rotocast polyethylene non scratch cabinet

**MFG#: DEF8000**  
**P/N: 98014**



Non-Drip Nozzle with Meter

**Designed to conveniently reach different DEF tank locations**



# Quickly remove contaminated fluid from any DEF tank

The Flo-Dynamics DEF EXTRACTOR is designed to remove contaminated fluid from the vehicle's DEF tank. If the fluid goes bad or becomes contaminated by another fluid, the DEF EXTRACTOR will easily extract the fluid through the filler tube.

**FEATURES:**

- Designed to conveniently reach a variety of DEF tank locations
- 2-3 GPM removal rate through 3/8" O.D. hose
- 3-8 GPM removal rate through 1/4" O.D. hose
- 12V 3.5 GPM pump
- OPEN/CLOSE service hose valve
- ON/OFF suction switch
- 30 gallon DEF tank
- Manual lower drain valve
- Four polyethylene casters for easy mobility

**INCLUDES:**

- 12' service hoses (3/8" O.D. and 1/4" O.D. sizes)



**MFG#: DEF EXTRACTOR**  
**P/N: 40400026**

SPECIFICATIONS	DEF8000	DEF EXTRACTOR
Dimensions	43"H x 23"W x 26"D	
Tank Capacity	30 gallons	
Power	12 Volts	



On/off suction switch



Open/close service hose valve



Manual lower drain valve



# Trouble-free operation in cold temperatures

Designed to allow for easier service on differentials and gear boxes, the DFX3500 works in all types of weather, including cold temperatures. Its 3.5 GPM gear pumps make fast work of the thicker, heavier fluids associated with differential services.

**FEATURES:**

- Two powerful 3.5 GPM gear pumps
- Portable with small footprint
- 20 foot 12 volt power cord for great mobility
- Storage shelf able to hold (2) 5 gallon buckets

**INCLUDES:**

- Fingertip controlled pendant with 11 foot reach allows for easier, faster service
- Two specially designed flexible and adjustable adapters to fit and hold in all differential openings
- #40100064 - 3/8" hose adapter
- #40100066 - 1/4" hose adapter
- #944096W Magnetic filter



**MFG#: DFX-3500**  
**P/N: 98009**



Optional Adapter #40100088  
Differential Chrysler 300 AWD



Patented pendant      Magnetic filter



Flexible hose adapters

## Two separate systems

The DFPSX-500 provides quick and easy service on differentials, manual transmissions, transfer cases and power steering systems. Fingertip controlled pendant with 11 foot reach allows for easier, faster service.

**DIFFERENTIAL FLUID**

- Two 4 GPM gear pumps handle thicker, heavier fluids
- Includes flexible adapters for all driveline openings
- Adapter storage rack
- Two-button operation
- Serviceable magnetic filter for catching metal particles
- Convenient, portable roll-around unit

**POWER STEERING FLUID**

- Two 0.9 GPM diaphragm pumps
- Replaces up to 95% of the old power steering fluid in less than 8 minutes
- Clear hoses for visual confirmation of new and waste fluid movement
- Battery cables hook up directly to vehicle's battery
- Dual pumps and service hoses drain and refill power steering system through the system's reservoir
- Fully portable – can perform service anywhere



**MFG#: DFPSX-500**  
**P/N: 40400050**

SPECIFICATIONS	DFX 3500	DFPSX-500
Dimensions	41"H x 28" W x 23"D	38" H x 18" W x 25" D
Weight	94 lb.	88 lb.
New Fluid	2 quarts	Connects to commercially available 64 fl. oz. bottles
Used Fluid	2 quarts	1 gallon bottle
Power	12V	12V

# Extract and fill engine, power steering, automatic and manual transmission, differential, and transfer case fluids

**FEATURES:**

- Dedicated triple gear pump design prevents cross contamination
- (1) 6.5 GPM 12V D/C gear pump for fast extraction
- (2) 3.6 GPM 12V D/C gear pumps for fast filling and draining waste tank
- Automatic shutoff when waste fluid tank is full
- LED indicators
- Onboard adapter organizer
- Four polyethylene casters for easy mobility
- Easy to operate
- Includes standard adapter set #944014, magnetic filter #944096W, master coupler #40100003

**INCLUDES:**



Adapter organizer with removable drip tray



Magnetic Filter #944096W



Master Coupler #40100003



Standard Adapters with flex hoses adapt to any shape #944014

SPECIFICATIONS	EVAC-U-MAX
Dimensions	39"H x 17"W x 26"D
Weight	132 lb.
New Fluid Tank	5 quarts
Used Fluid Tank	20 quarts
Power	12V

Patented fingertip controlled pendant with 11' reach allows faster one tech service



**OPTIONAL ACCESSORIES**



**Power Steering Adapter**  
MFG#:941178E



**Optional Adapters**  
MFG#:944015



**MFG#: EVAC-U-MAX**  
**P/N: 98007**

MISCELLANEOUS

# The fast, easy, economical way to clean up spills

Perfect for automotive, heavy duty, industrial, marine, collision, and farm applications. Just connect to shop air, vacuum up the spill, empty into a waste container, done. It's that simple!

Our patented process can vacuum up all kinds of fluids, from anti-freeze to heavy weight hydraulic oils. Not to be used for gasoline.

**FEATURES:**

- Recipient of three *Innovation Awards*, Motor Top 20, PTEN and TST
- Dual mufflers provide better suction
- Redesigned bucket eliminates dimples on the squeegees and brushes
- Replaceable squeegees and brushes for rougher floors
- 2" bucket caster wheels



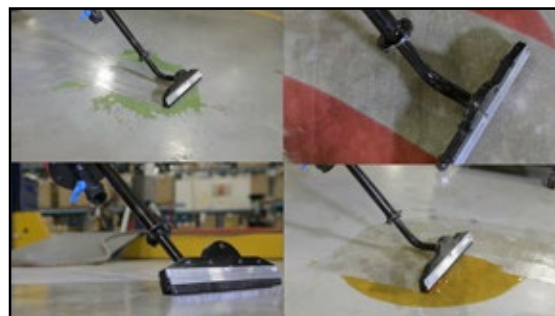

**No contaminated pellets to dispose of**



**No rags or pads to dispose of**



**No daily costs for spill products**



**Watch our demonstration video here**

**MFG#: AirVac**  
**P/N: 40400020**

Shown with included waste bucket and bracket

## Recipient of three Innovation Awards

SPECIFICATIONS	AirVac
Dimensions	48"H x 10.75" W
Weight	23 lb.
Nozzle Width	10"
Tank Diameter	7"
Fluid capacity	1.5 gallons



MISCELLANEOUS





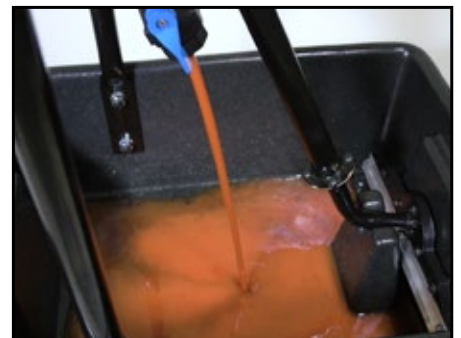
MISCELLANEOUS



Connects to shop air



Cleans up fluid spills with ease



Drains into included bucket

GO WITH THE FLO

**DISTRIBUTED BY:**



3300 Reedy Drive Elkhart, IN 46514  
800-303-5874 [www.flodynamics.com](http://www.flodynamics.com)

#941096 Printed in the U.S.A. 2019  
Not responsible for typographical errors.